

# INTEGRITY TREADMILL

## A CARDIO LEGACY

Designed with aesthetics in mind and built to provide more functionality for exercisers with the same uncompromising durability facilities have come to expect.

FEATURED:  
Integrity Series Treadmill with  
Deluxe Base and SL Console  
in Black Onyx



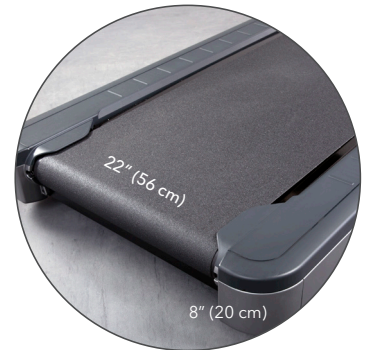
## FLEXDECK SHOCK ABSORPTION SYSTEM

Reduces knee and joint stress by up to 30% more than non-cushioned surfaces. Eight incredibly durable Lifespring™ shock absorbers deliver consistent cushioning.



## SWING-FREE AREA

Open space near the console enhances comfort by providing more room for both runners and walkers.



## ROOM TO RUN

A low step-up height of just 8" (20 cm) and a wide running surface of 22" (56 cm) is inviting to both experienced runners and new exercisers.

*LifeFitness*

# INTEGRITY TREADMILL

---

## CONSOLE OPTIONS

Console choices include simple, get-on-and-go functionality to more engaging options. Each offers wireless connectivity and insights through Halo.Fitness.



**INTEGRITY SL CONSOLE**



**DISCOVER ST CONSOLE**



**DISCOVER SE3 HD CONSOLE**

## BASE OPTIONS



**SIMPLE BASE**

Sleek and inviting design. Available in Arctic Silver only.



**DELUXE BASE**

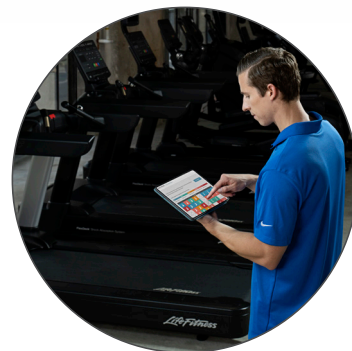
Longer side arms and aesthetic touches like stainless steel venting and four color options.



## SERVICEABILITY

---

The Integrity Series has been designed to offer easy access for maintenance and servicing to keep your equipment lasting longer and reduce downtime.



## HALO FITNESS CLOUD

---

Halo offers insights into equipment use and exerciser behavior. It also allows for seamless software updates, facility-wide equipment settings, and service notifications.

# INTEGRITY TREADMILL

KEY | • STANDARD • OPTIONAL - NA

BASE FEATURES	SIMPLE "S"	DELUXE "D"
DX3™ Belt and Deck System (belt tracking system)	•	•
FlexDeck® 2.0 Shock Absorption System (8 Lifespring shock absorbers)	•	•
Speed Range	0.5 - 14 mph (0.8 - 23 kph)	0.5 - 14 mph (0.8 - 23 kph)
Rollers: 3.5" (9 cm) precision crowned steel rollers, front and back	•	•
Incline	0-15%	0-15%
Motor System: 4-HP AC Continuous Duty (8-HP Peak Duty) Motor. Motor efficiency rated IE2 at 2-HP	•	•
Side handrails	16" (41 cm)	24" (61 cm)
Removable locking cup holders	2	2
Integrated accessory tray	•	•
Remote speed and incline controls	-	•
<b>FRAME</b>		
Cast aluminum lower side rails and end caps	-	•
Plastic lower side rails and end caps	•	-
Brushed stainless steel vent detail	-	•
Front wheels for easy mobility	•	•
Stride Sensor	-	•
Adjustment levelers for product stability	•	•
Quick-release removable shroud for simple serviceability	•	•
Robust paint (corrosion, stain, and chemical resistant coating)	•	•
Arctic Silver	•	•
Titanium Storm, Diamond White and Black Onyx Frames	-	•
Optional service wheel for routine maintenance and ease of mobility	○	○

TECHNICAL SPECIFICATIONS	SIMPLE "S"	DELUXE "D"
Running surface	22 x 60" (56 x 152 cm)	22 x 60" (56 x 152 cm)
Step-up height	8" (20 cm)	8" (20 cm)
Max user weight	400 lbs (181 kg)	400 lbs (181 kg)
Length	82" (209 cm)	82" (209 cm)
Width	36" (92 cm)	36" (92 cm)
Height	56" (142 cm)	56" (142 cm)
Unit weight	425 lbs (193 kg)	434 lbs (197 kg)
<b>POWER REQUIREMENTS</b>		
All treadmills should be installed with a dedicated electrical circuit - line, neutral, ground (a single circuit breaker for each treadmill)	Consult the installation manual	Consult the installation manual
120V, 20A or 230V, 10A (varies by country) outlet with dedicated line, neutral, ground wires and dedicated circuit breaker	•	•
Japan: 100V, 20A or 200v, 10A outlet with dedicated line, neutral, ground wires and dedicated circuit breaker	•	•
<b>WARRANTY*</b>		
Mechanical	1 Year	1 Year
Labor	1 Year	1 Year
Cosmetic items	6 Months	6 Months
Frame and motor	7 Years	7 Years

LifeFitness.com

©2021 Life Fitness, LLC. All Rights Reserved. Life Fitness and FlexDeck are registered trademarks of Life Fitness, LLC and its affiliated companies and subsidiaries. PM-11-21 (5.21)

LifeFitness